

# Respondus LockDown Browser

Respondus LockDown Browser is required to access the assessments in this course. Please follow the instructions below to install the Respondus Lockdown Browser.

If you are using a computer located on SAU Tech's main campus, Respondus LockDown Browser should already be installed. If Respondus LockDown Browser is already loaded, skip to [Taking an Assessment with Respondus LockDown Browser](#).

*Note: Respondus LockDown browser should **only** be used for taking the assessments in this course. Continue to use a regular browser for **all other areas** of this course.*

*The **FINAL EXAM** in this course **does not** require the Respondus LockDown browser. The Final Exam must be taken at an approved proctored site. Please visit our website at [www.sautech.edu](http://www.sautech.edu) for a list of approved sites or see the campus announcement section of My Blackboard.*

## System Requirements

The system requirements for Respondus LockDown Browser are as follows:

### Windows

- Windows Vista, Windows XP, Windows 2000, Windows ME, Windows 98
- Internet Explorer (must be configured to the requirements for the Blackboard platform)
- 1 MB of permanent space on the hard drive

### Macintosh

- OS X 10.3.9 or higher (Power PC or Intel)
- Safari browser
- 2 MB of free hard drive space
- 512 MB RAM

## INSTALLATION OF RESPONDUS LOCKDOWN BROWSER

Follow these steps to install the Respondus LockDown Browser:

Start your computer

Confirm that a supported version of Internet Explorer is installed to your computer. This is accomplished by doing the following:

- Start Internet Explorer (if you are unsure how to do this, click the "Start" menu in Windows, click "Programs," select "Internet Explorer")
- Select "Help" from the menu bar in Internet Explorer and then select "About Internet Explorer" to make sure the version is 5.5 or higher.

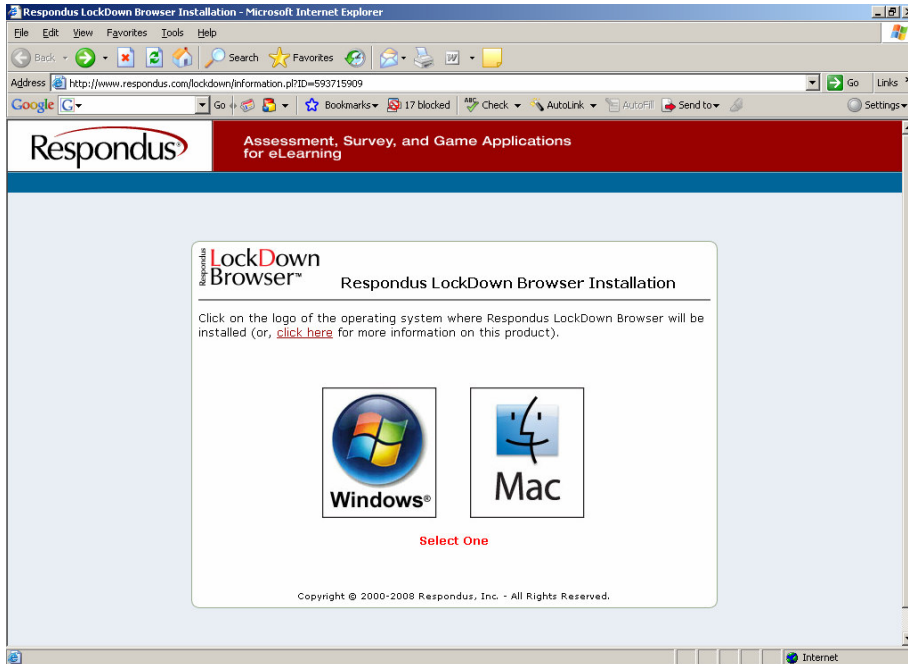
Enter this URL in Internet Explorer or Safari (Mac):

<http://www.respondus.com/lockdown/information.pl?ID=593715909>

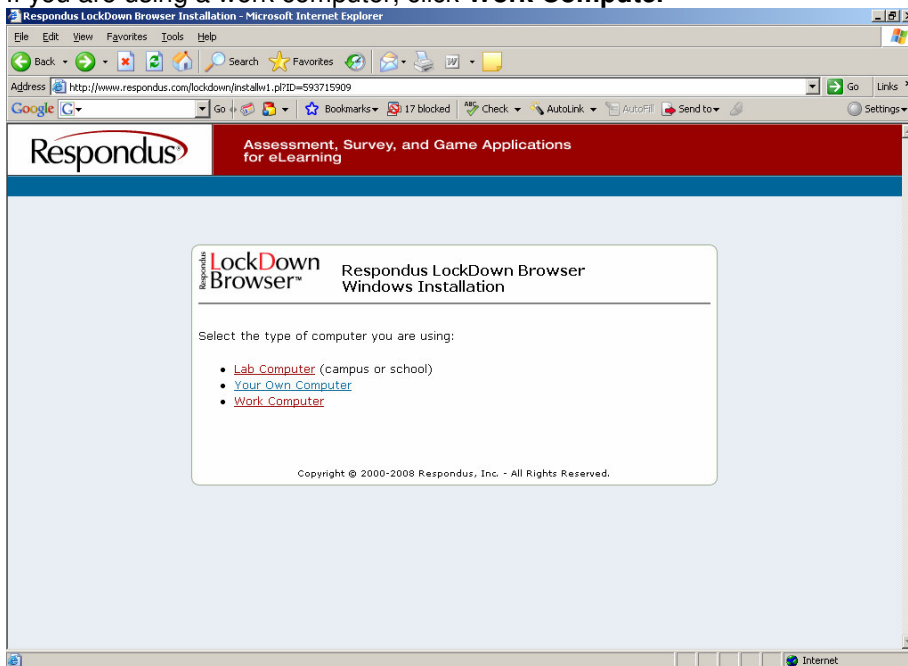
The following screen appears:

If your computer is a Windows computer, click **Windows**

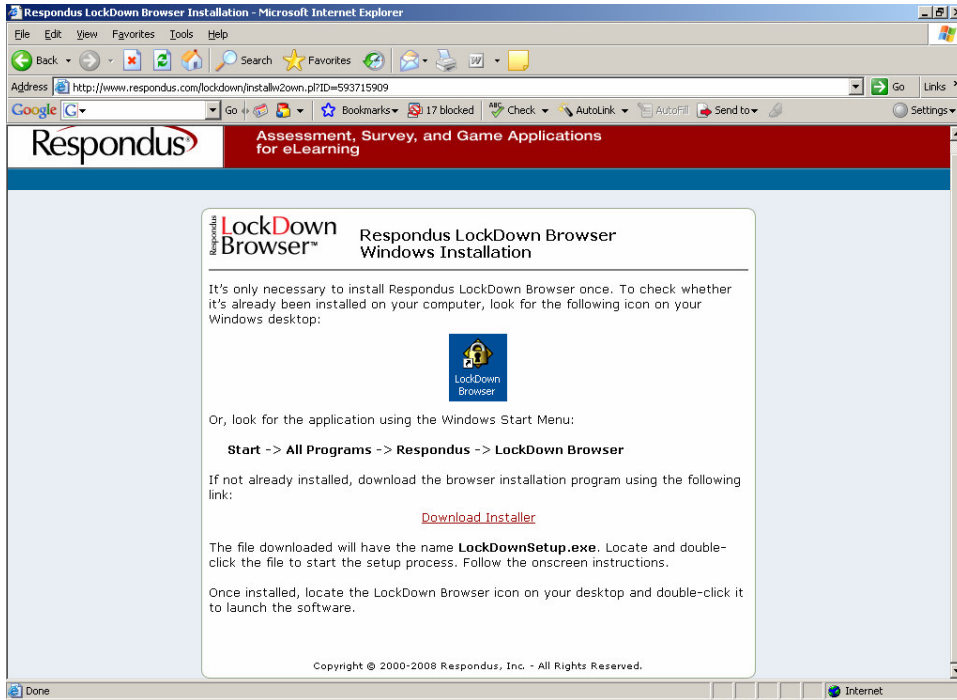
If your computer is a Macintosh, click **Mac**



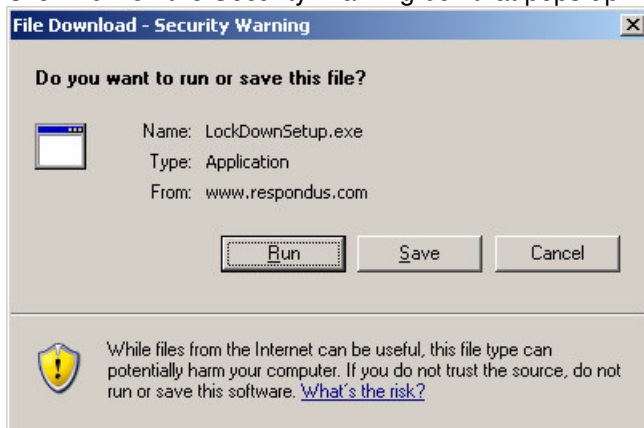
If you are using your own computer, click **Your Own Computer**  
If you are using a campus or school computer, click **Lab Computer**  
If you are using a work computer, click **Work Computer**



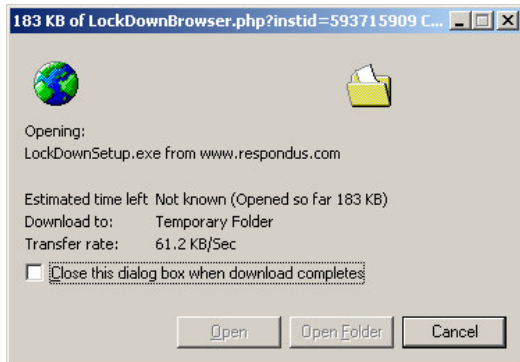
Click **Download Installer**.



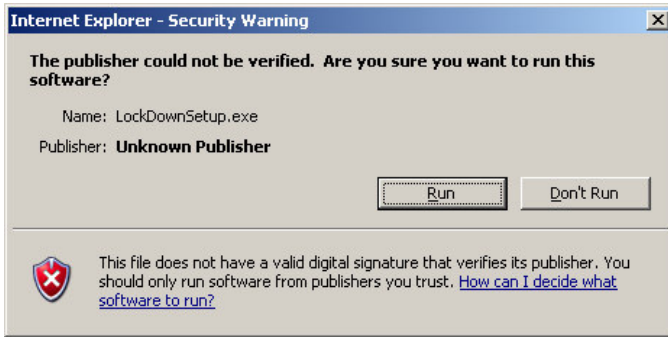
Click **Run** on the Security Warning box that pops up.



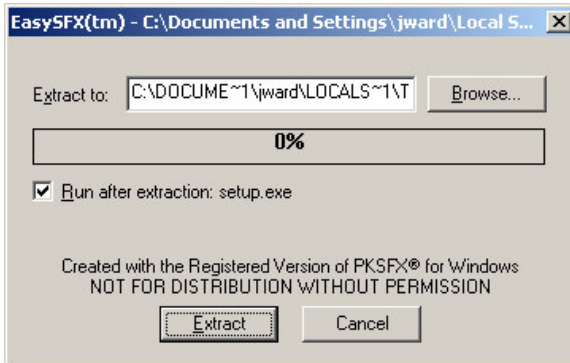
The file will download. It is approximately 3.22 MB in size.  
On a dial-up internet connection it will take approximately 9-10 minutes to download.  
On a broadband internet connection it will take approximately 1 minute to download.



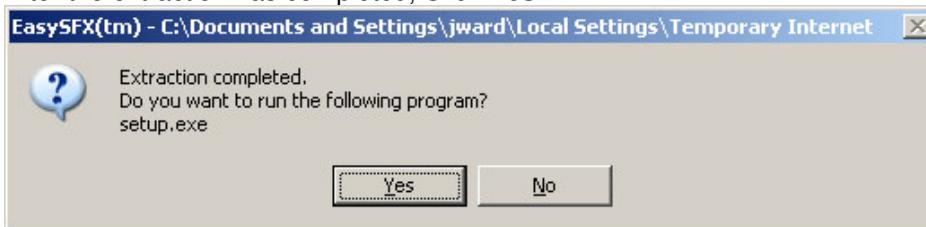
After the File Download finishes, click **Run** on the Security Warning box



Click **Extract**



After the extraction has completed, Click **Yes**

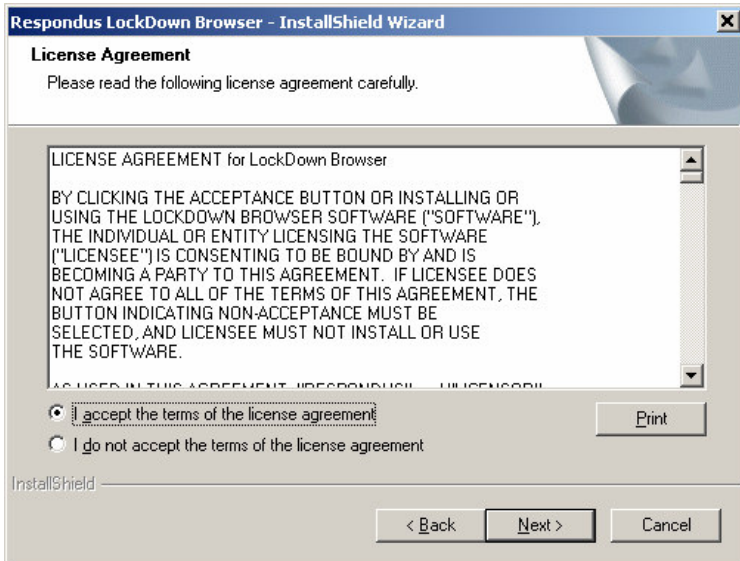


(Preparing Setup Screen appears, please wait)

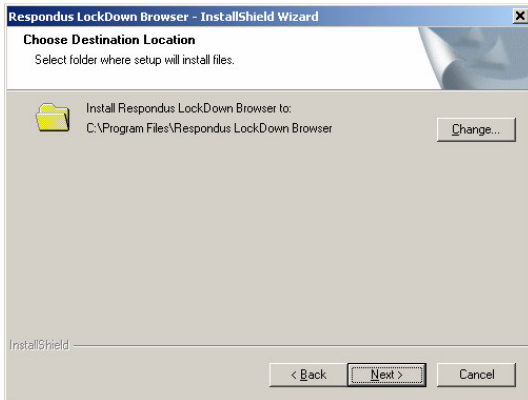
Click **Next**



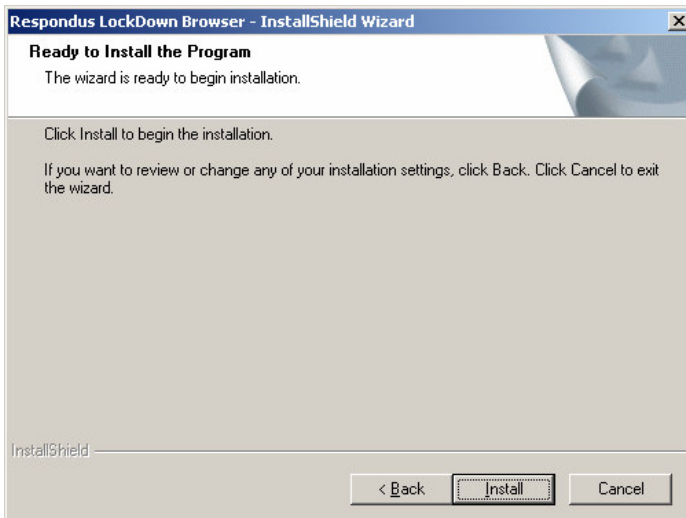
Select "I accept the terms of the license agreement", and then click **Next**



### Click Next

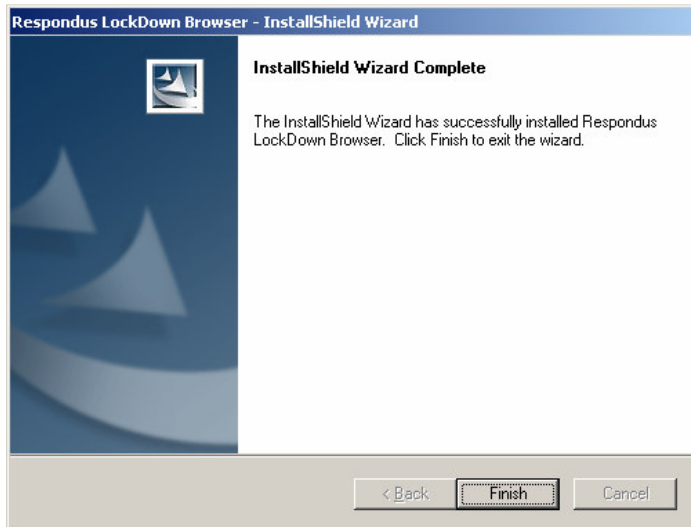


### Click Install



Files are installed.

The InstallShield Wizard Complete screen appears, click **Finish**



After the **Respondus LockDown Browser** has been installed, close Browser and follow these steps to take your assessment in your course.

### [Taking an Assessment with Respondus LockDown Browser](#)

1. Close all programs, unless one is used to connect you to the Internet.
2. Locate the Respondus LockDown Browser shortcut on the Windows desktop and double-click



LockDown Browser

*Or click Start, select Programs, select Respondus, and then click Respondus LockDown Browser.*

3. The login screen appears. Login to Blackboard by entering your username and password, select course, select assessment.
4. Click Begin Assessment and the assessment will start. Once the assessment is started, you will be unable to exit the assessment until the **Finish** button is clicked.
5. After you click Finish, a “You have successfully submitted your Quiz” message will display and View Results screen will appear if your instructor has selected this option.
6. Close your Respondus LockDown Browser.

To make sure your Respondus LockDown Browser is working correctly, please take the **Practice RLB Exam** in this course by following the above steps.

*Remember to use a **regular browser** for all other areas of this course. The Respondus LockDown Browser is **for your assessments** only.*

*If you should encounter problems with installation or using the Respondus LockDown Browser, please contact Debbie Tucker at (870) 574-4453, [dtucker@sautech.edu](mailto:dtucker@sautech.edu) or Jonathan Ward at (870) 574-4586 [jward@sautech.edu](mailto:jward@sautech.edu) .*

### **Respondus LockDown Browser Updates**

Occasionally, you may be prompted to update your version of Respondus LockDown Browser.

When prompted to update, click Get Update and the latest version will be installed. Or you may Check for Latest Version by clicking the ( i ) icon from the toolbar, select Check for New Version. Follow the prompts to download and install the latest version.